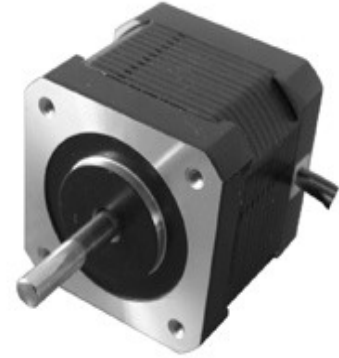




Data Sheet of NEMA17 2-Phases & 1.8° of Step Angle

General Specifications

Item	Specifications
Step Angle Accuracy	±5% (full step, no load)
Temperature Rise	80°C Max.(rated current, 2 phase on)
Ambient Temperature	-10°C- +50°C
Insulation Resistance	100MΩMin.500V DC
Dielectric Strength	500V AC for one minute



Specifications

Model	Voltage	Current	Resistance	Inductance	Holding Torque	Detent Torque	Rotor Inertia	Weight	Size		
									L mm	L1 mm	L2 mm
42BYGH616-01B	V	A	Ω	MH	Nm	g.cm	g.cm ²	KG	L mm	L1 mm	L2 mm
	2.4	1.7	1.5	3.2	0.4	220	54	0.24	40	24	300

Wiring Diagram

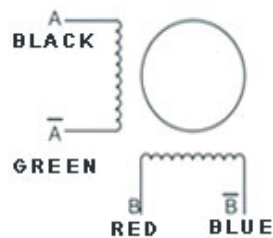




Figure Dimensions

unit: mm

